

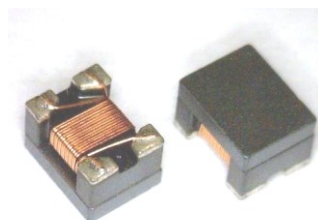
SMD Common Mode Choke - 4532AC (CAN-bus)



Features & Application

2020/1/1

- Designed for common mode noise suppression on CAN or CAN FD in automotive or general industrial automation applications
- Can be used for FlexRay automotive bus system
- 50% lower DCR and higher current handling than other CANbus chokes in the market
- Filters a broad frequency range of common mode noise
- Low profile 1812 footprint: 4.70 × 3.40 × 3.0 mm Core material Ferr



Environmental RoHS compliant, halogen free

Terminations RoHS compliant matte tin over nickel over silver palladium-glass frit.

Ambient temperature -40°C to +125°C with Irms current.

Maximum Part Temperature +150°C

Storage temperature Component: -40°C to +150°C.

Tape and reel packaging: -40°C to +80°C

Resistance to soldering heat Max three 40 second reflows at +260°C, parts cooled to room temperature

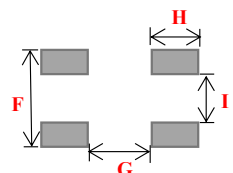
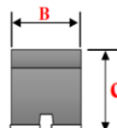
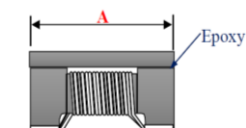
Moisture Sensitivity Level (MSL) 1 (unlimited floor life at <30°C /85% relative humidity)

★ When ordering, please check part number

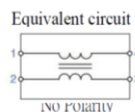
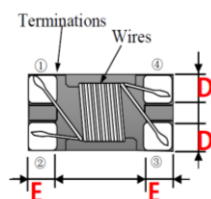
Part number	Inductance(uH) @100KHz ± 30%	Impedance(Ω) @100MHz min. typ.	DC Resistance (Ω) max	Irms (mA)
CMC4532AC110-0.46AT	11	300 600	0.600	460
CMC4532AC220-0.4AT	22	500 1200	1.000	400
CMC4532AC510-0.3AT	51	1000 2800	1.000	300
CMC4532AC101-0.26AT	100	2000 5800	2.000	260

Isolation (Vrms) : 250V.

Winding to winding isolation (hipot) tested for one minute.



Recommended Land P



Dimensions	
A	4.50±0.2
B	3.20±0.2
C	2.80±0.2
D	1.23 typ
E	1.00 typ
F	3.39 typ
G	2.40 typ
H	1.35 typ
I	0.75 typ
unit : mm	

Impedance/Inductance/Q/ LCR Angilent E4991A/4263B

Resistance DC Chroma 16502

Current per winding that causes a 20°C rise from 25°C ambient

Electrical specifications at 25°C

Weight 134 – 147 mg

Packaging 500/7 " reel; Plastic tape: 12 mm wide.

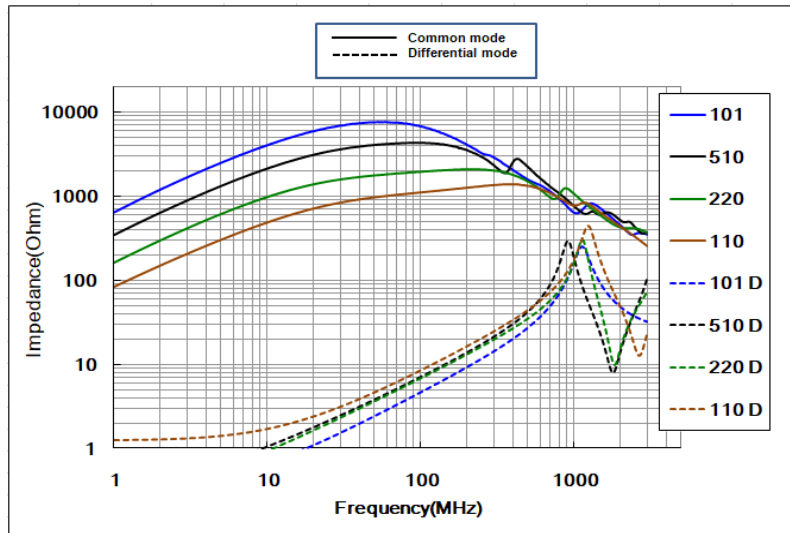
Packaging will different, according to the various chip size.

Contact Us	
US	sales-us@bing-ri.com.tw
Taiwan	sales-tw@bing-ri.com.tw
China	sales-cn@bing-ri.com.tw
Japan	sales-jp@bing-ri.com.tw

Official Website :
https://www.bing-ri.com.tw/

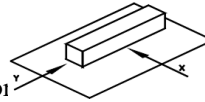
Typical Impedance vs Frequency

Common Mode & Differential mode

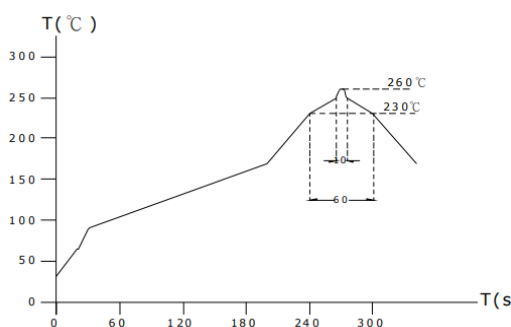


GENERAL CHARACTERISTICS

1. Operating temperature range: -40 TO $+125^{\circ}\text{C}$ (Includes temperature when the coil is heated)
2. External appearance: On visual inspection, the coil has no external defects.
3. Terminal strength: After soldering. Between copper plate and terminals of coil. Push in two directions of X.Y withstanding at below conditions.
Terminal should not peel off. (refer to figure at right) 0.8kg Min -4532
4. Insulating resistance: Over $100\text{M}\Omega$ at 100V D.C. between coil and coil
5. Dielectric strength: No dielectric breakdown at 100V D.C. for 1 minute between coil and core
6. Temperature characteristics: Inductance coefficient $(0\sim 2,000)\times 10^{-6}/(^{\circ}\text{C } -25\sim +80)$. $^{\circ}\text{C}$, inductance deviation within $\pm 5.0\%$, after 96 hours.
7. Humidity characteristics(Moisture Resistance): Inductance deviation within $\pm 5\%$, after 96 hours in $90\sim 95\%$ relative humidity at 40 ± 2 and 1 hour drying under normal condition.
8. Vibration resistance: Inductance deviation within $\pm 5\%$, after vibration for 1 hour. In each of three orientations at sweep vibration ($10\sim 55\sim 10\text{ Hz}$) with 1.5mm P-P amplitudes.
9. Shock resistance: Inductance deviation within $\pm 5\%$, after being dropped once with 981m/s^2 (100G) shock attitude upon a rubber block method shock testing machine, in three different
10. Resistance to Soldering Heat: 260, 10 seconds(See attached recommend reflow)
11. Storage environment: Storage condition: Temperature Range: $10 \sim 35$ (Generally: $21 \sim 31$), Humidity Range: $50\% \sim 80\% \text{ RH}$ (Generally: $65\% \sim 75\%$); Transportation condition: Temperature Range: $-35 \sim 85$, Humidity Range: $50\% \sim 95\% \text{ RH}$
12. Use components within 12 months. If 12 months or more have elapsed, check solderability before use.
13. Reflow profile recommend:



Lead-free heat en duran ce test



Lead-free the recommended reflow condition

